

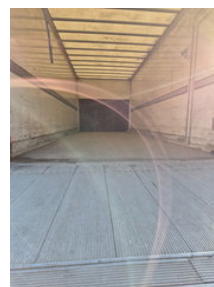
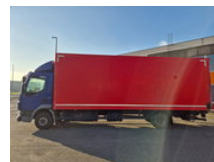
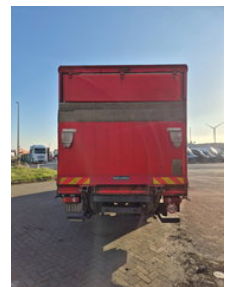
# DIFRENT

## RENTING & USED TRUCKS

### DAF LF 210 FA EEV

#### General features

|                            |            |
|----------------------------|------------|
| Brand                      | DAF        |
| Model                      | LF         |
| Subcategory                | Box        |
| Odometer reading           | 654.800km  |
| Construction year          | 2012       |
| Date of first registration | 17-12-2012 |
| Condition                  | Used       |
| Fuel                       | Diesel     |
| Emission class             | Euro 5     |
| Reference                  | OL419820   |



#### Characteristics

|               |          |
|---------------|----------|
| Empty weight  | 6.125kg  |
| Load capacity | 5.865kg  |
| GVW           | 11.990kg |

Serial number

XLRAE45FF0L419820

---

Cylinder contents

4.462cc

# DAF LF 210 FA EEV

## Technical specifications

|                    |           |
|--------------------|-----------|
| Number of axes     | 2         |
| Axis configuration | 4x2       |
| Transmission       | Automatic |
| Engine output      | 210hp     |

## Accessories

- Air conditioning
- Electrically operated windows
- Disc brakes
- Power steering